



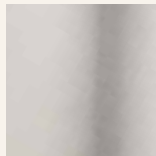
The Mic T is the modern minimalistic and compact spotlight inspired by the iconic microphone of the greatest jazz singers in the 1920's and 1930's.

As a track mounted spotlight The Mic T is a part of The Mic series. A series of spotlights, downlights and pendants crafted in premium materials and available with various types of installation options and color combinations made by ELLISELLIS.

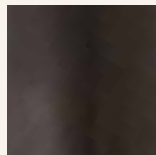
The Mic T is a versatile spotlight with maximum flexibility and a great light.



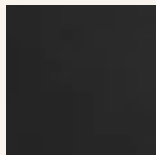
Brushed Brass



Brushed Nickel



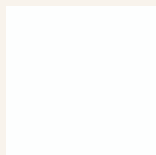
Patinated Brass



*Powder Black
(Semi-matt structure)*



*Black Gunmetal
(Matt smooth)*



*Powder White
(Semi-matt structure)*

Technical Specifications

PRODUCT TYPE

Single adjustable track spotlight

ENVIRONMENT

Indoor

COLOURS

Brushed Brass
Patinated Brass
Black Gunmetal
Brushed Nickel
Powder Black
Powder White

ADAPTER COLOURS

Black Matt
White Matt

MATERIALS

Brass, Aluminium, ABS

MAINTENANCE

Maintenance of brass can occur.
Brass is a living material and patinas continuously.
The brass is untreated.

VOLTAGE

CE: 220-240V
No driver needed

LIGHT SOURCE

Replacable LED GU10 230V MAX 7,5W
Recommended bulb V95, tested with product

CLASSIFICATION

IP20

CERTIFICATION

CE

PACKAGING MEASUREMENTS

Cardboard box H195 mm x W105 mm x D105 mm

DIMMER

Dimmable by external dimmer
(Dimmable bulb required)

INSTALLATION

Track mounted. 3-phase 230V track.
Global 3-phase adapter.
(Works with most European manufactured tracks)

FUNCTION

355° rotate and 90° tilt

SPOT MEASUREMENTS

